



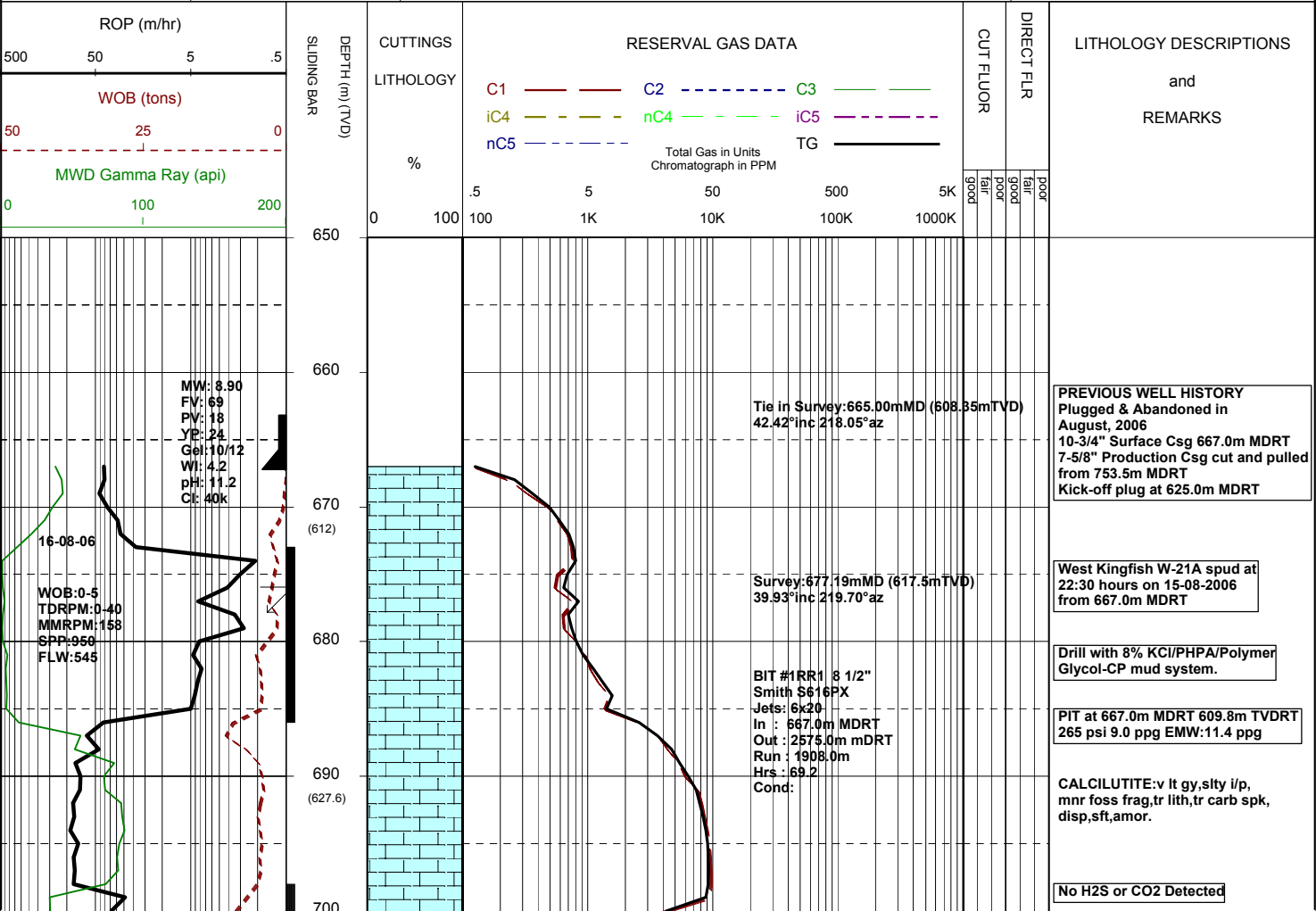
MASTERLOG

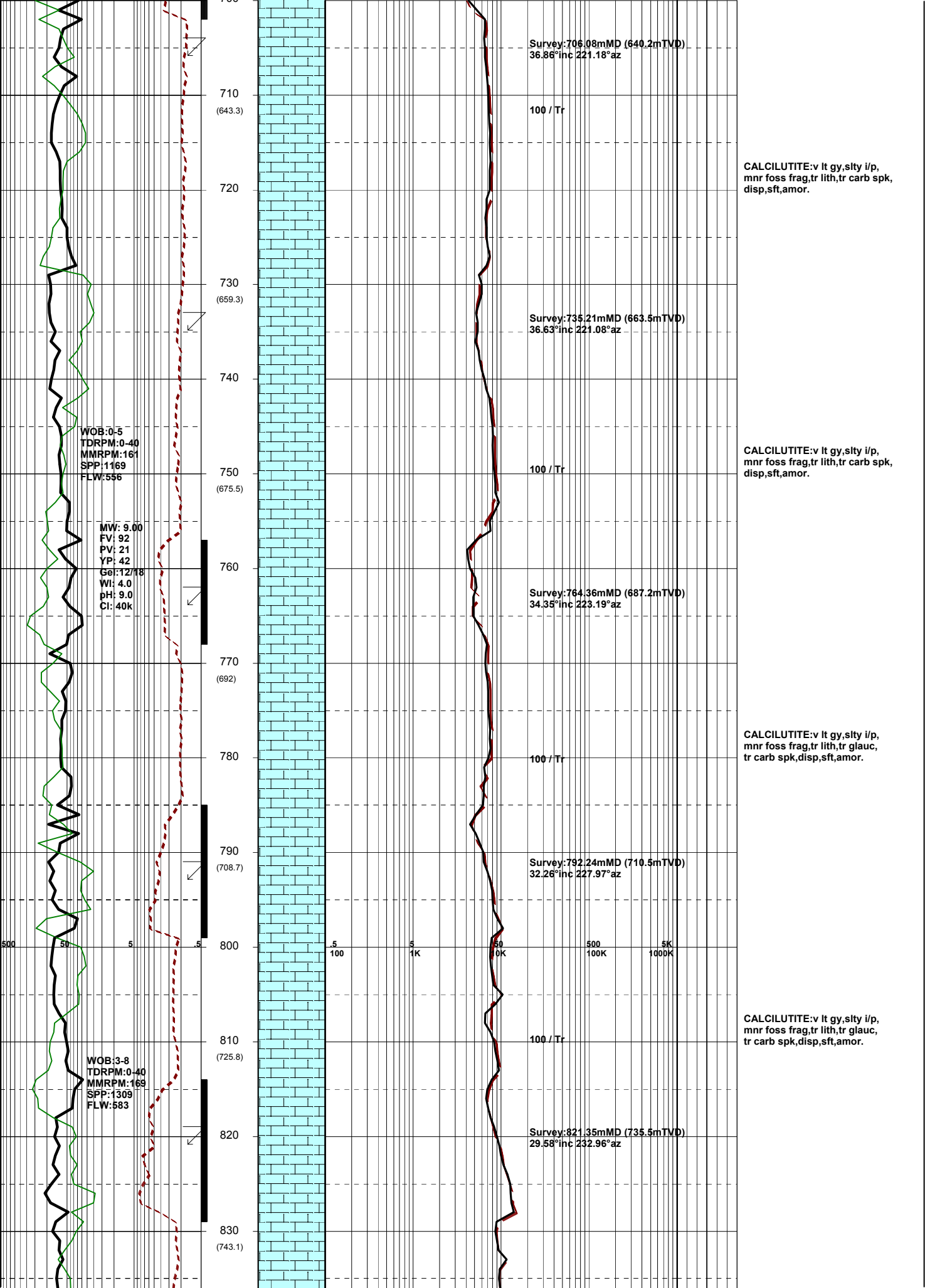
WKF W-21A

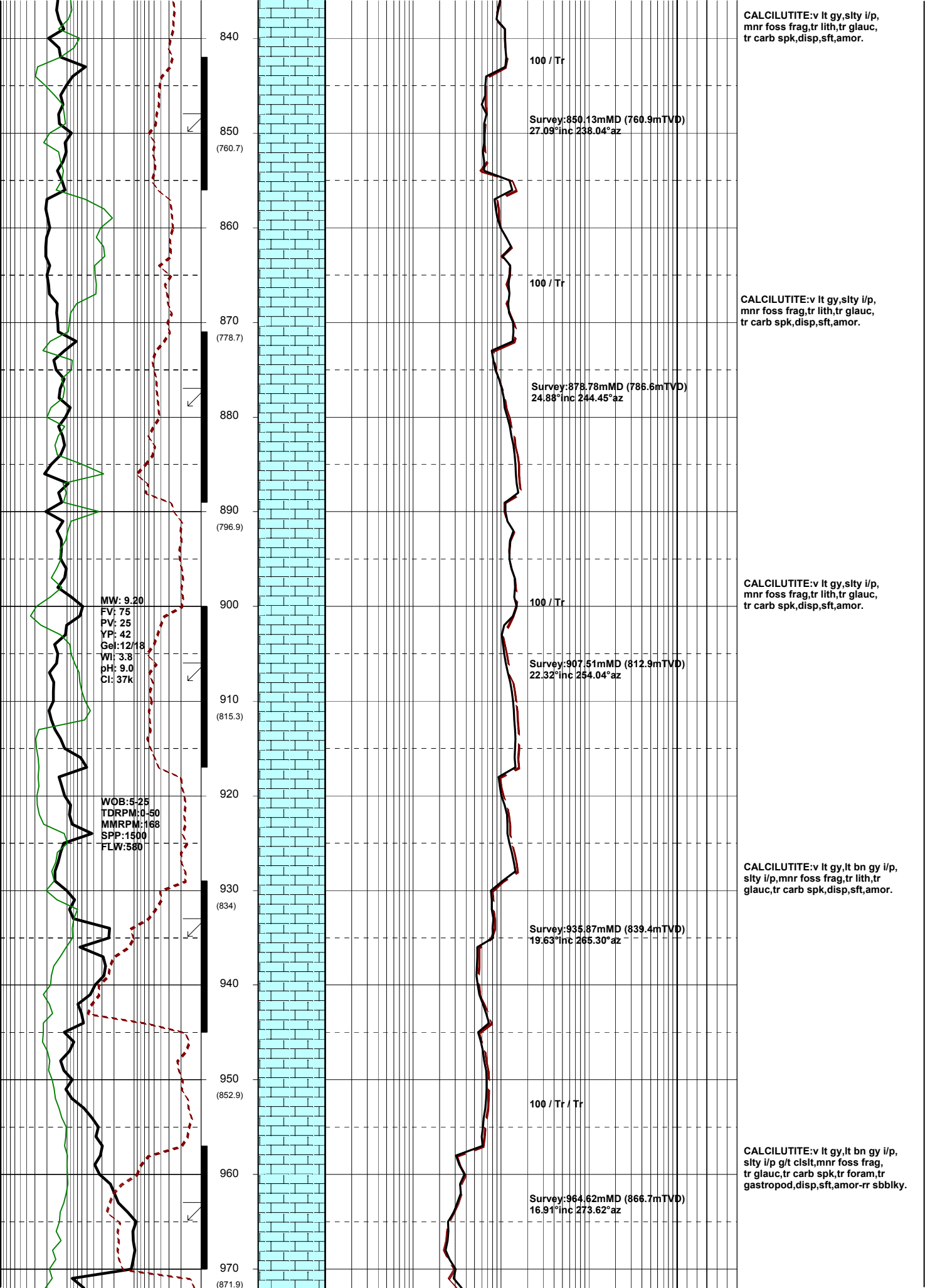


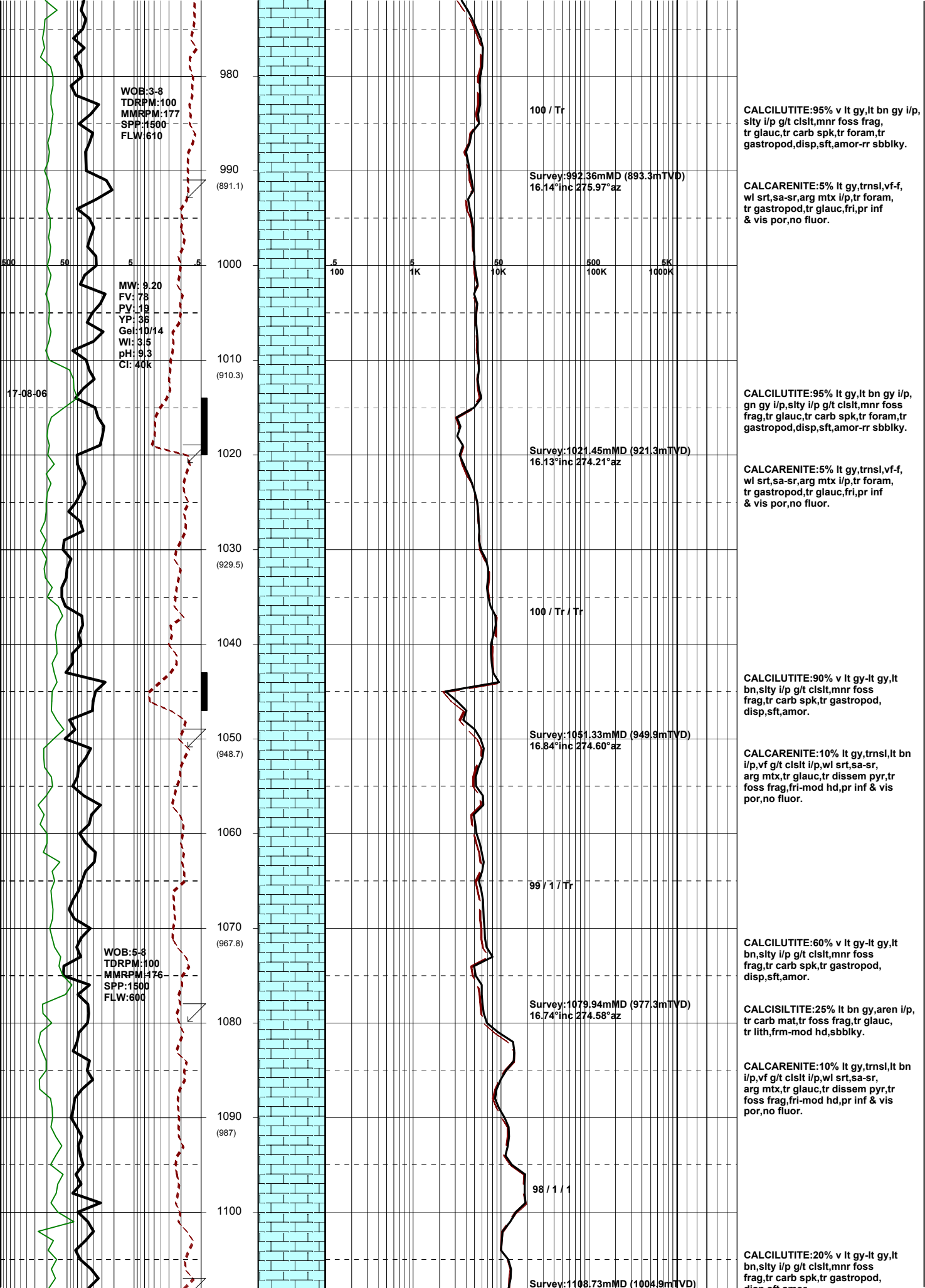
GENERAL	SURFACE POSITON	HOLE / CASING INFO	DATE / DEPTH	ENGINEERS
Country : AUSTRALIA	Longitude : 148 06 19.494E	8-1/2" Hole to 2575.0m MDRT	Spud Date : 15-08-2006	Steve Oades
Permit : VIC L7	Latitude : 38 35 34.837S		Total Depth Date : 21-08-2006	Mark Smith
Field : Kingfish	MGA Co-ord X : 596267.10mE	10-3/4" Csg Shoe at 667.0m MDRT	Total Depth : 2575.0m TVDRT	
Basin : GIPPSLAND	MGA Co-ord Y : 5727806.60mN	7" Production Csg at	True Vertical Depth : 2412.6m TVDRT	
Well Type : DEVELOPMENT	RT to MSL : 33.43m		Log Scale : 1/ 500	
Rig Name : NABORS 453	RT to Sea Bed : 109.56m			

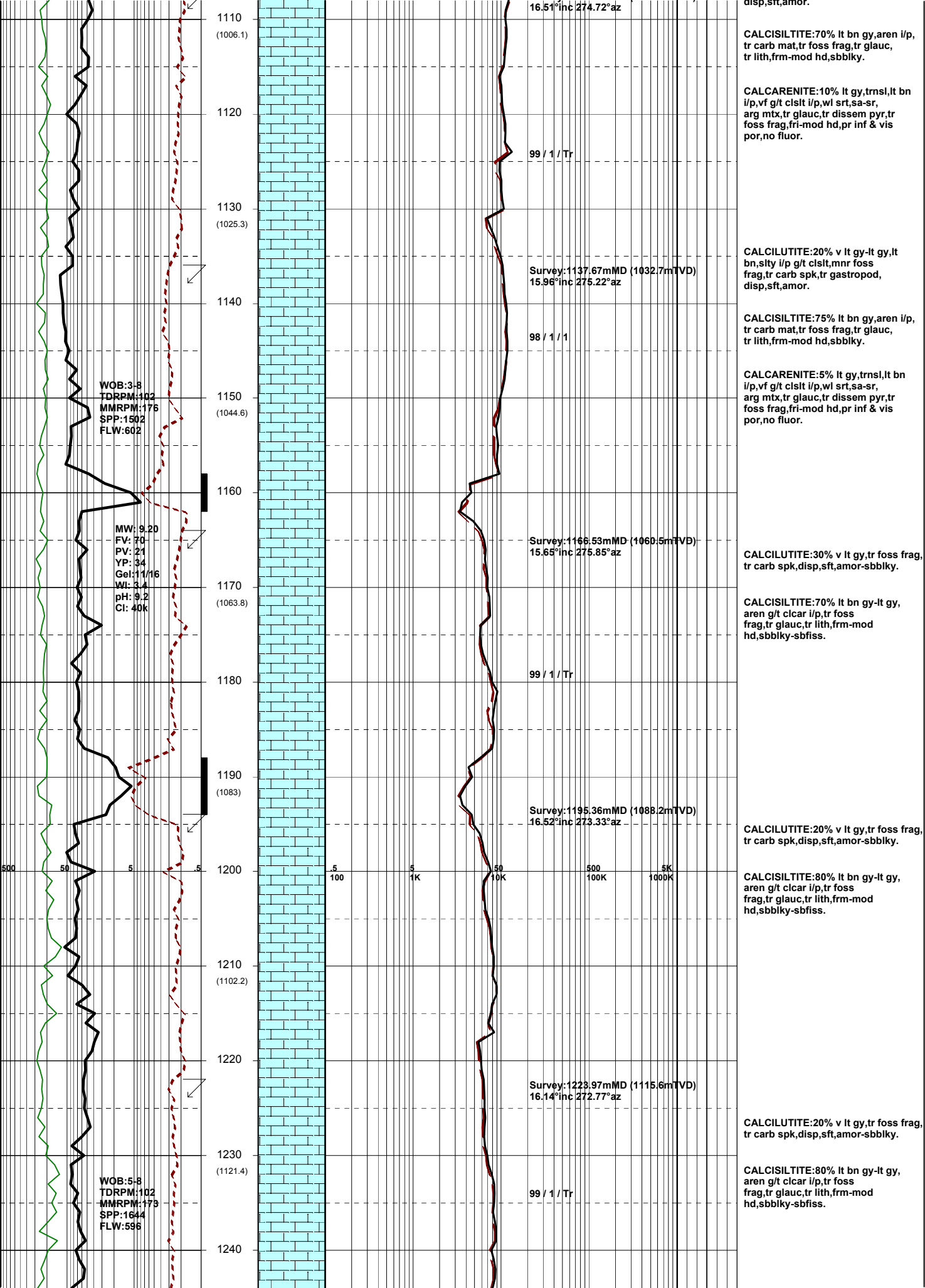
ABBREVIATIONS	LITHOLOGY LEGEND	ENGINEERING LEGEND
MW Mud Weight FV Funnel Viscosity PV Plastic Viscosity YP Yield Point Gel Gel Strength WL Water Loss KCl Potassium Chloride Cl Chlorides Incl Inclination Az Azimuth	WOB Weight on Bit (klbs) RPM Rotations Per Min FLW Flow Rate (gpm) SPP Pump Pressure (psi) RR Re-Run Bit TG Trip Gas CG Connection Gas BG Background Gas DGP Drilled Gas Peak MM Mud Motor	CASING SHOE LINER HANGER BIT CHANGE DEVI. SURVEY SWC UNRECOV SIDEWALL CORE CORE WIRELINE LOGS MDT POINTS: PRESSURE ONLY SAMPLE SEAL FAILURE TIGHT SLIDING
	CLAYSTONE SILTSTONE SANDSTONE SHALE CONGLOMERATE COAL MARL LIMESTONE DOLOMITE CHERT BRYOZOA RADIOLARITES ECHINOIDS CORALS FORAMINIFERA LITHIC FRAGMENT CARB FRAGMENT QUARTZITE INTRUSIVES GLAUCONITE PYRITE CEMENT	

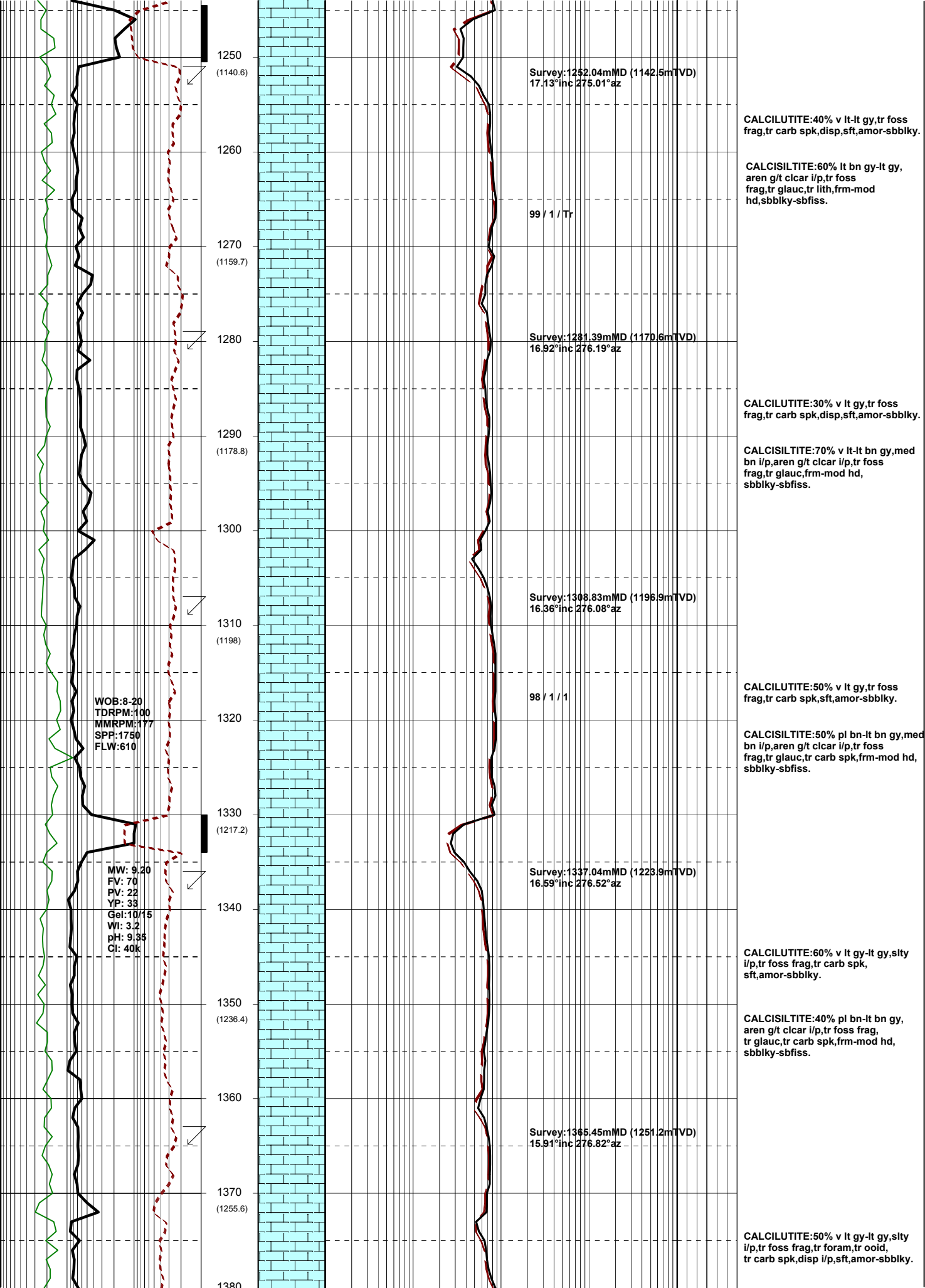


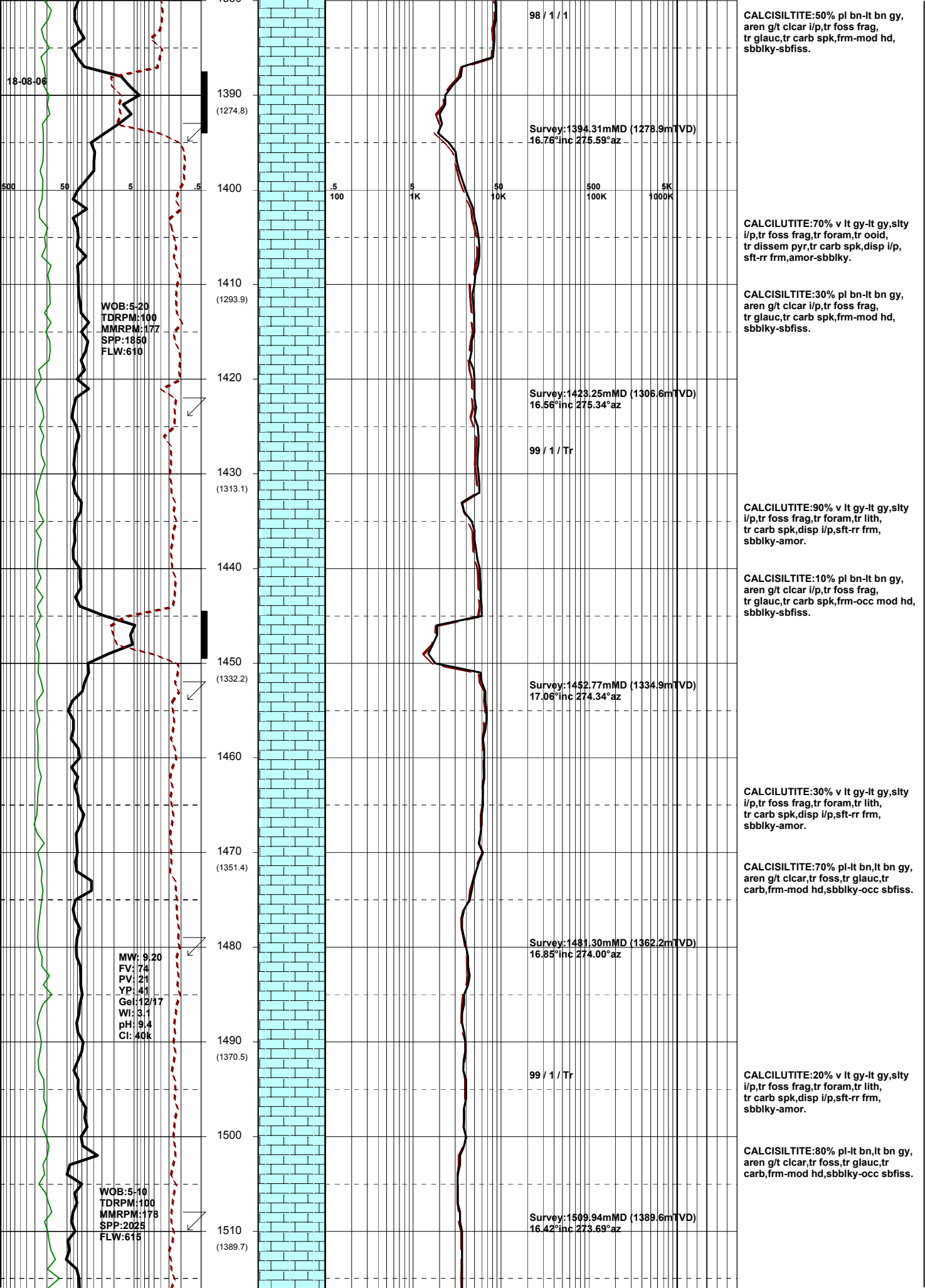


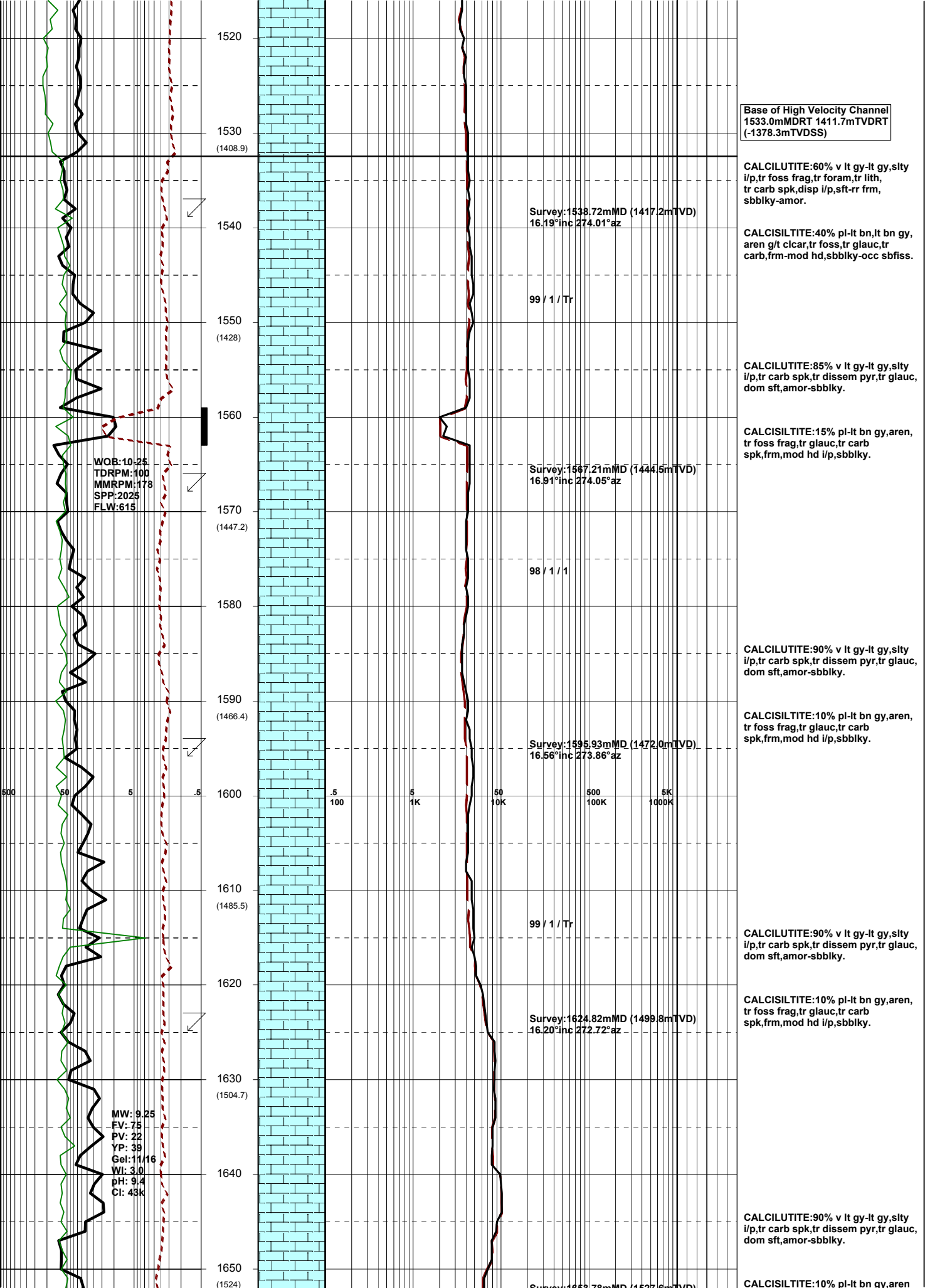












Base of High Velocity Channel
1533.0mMDRT 1411.7mTVDRT
(-1378.3mTVDSS)

CALCILUTITE:60% v lt gy-lt gy,sity
i/p,tr foss frag,tr foram,tr lith,
tr carb spk,disp i/p,sft-rr frm,
sbbkly-amor.

Survey:1538.72mMD (1417.2mTVD)
16.19°inc 274.01°az

CALCILUTITE:40% pl-lt bn,lt bn gy,
aren g/t clcar,tr foss,tr glauc,tr
carb,frm-mod hd,sbbkly-occ sbfiss.

99 / 1 / Tr

CALCILUTITE:85% v lt gy-lt gy,sity
i/p,tr carb spk,tr dissem pyr,tr glauc,
dom sft,amor-sbbkly.

CALCILUTITE:15% pl-lt bn gy,aren,
tr foss frag,tr glauc,tr carb
spk,frm,mod hd i/p,sbbkly.

Survey:1567.21mMD (1444.5mTVD)
16.91°inc 274.05°az

WOB:10.25
TDRPM:100
MMRPM:178
SPP:2025
FLW:615

98 / 1 / 1

CALCILUTITE:90% v lt gy-lt gy,sity
i/p,tr carb spk,tr dissem pyr,tr glauc,
dom sft,amor-sbbkly.

CALCILUTITE:10% pl-lt bn gy,aren,
tr foss frag,tr glauc,tr carb
spk,frm,mod hd i/p,sbbkly.

Survey:1595.93mMD (1472.0mTVD)
16.56°inc 273.86°az

500 50 5 .5 .5 100 5 1K 50 10K 500 100K 5K 1000K

99 / 1 / Tr

CALCILUTITE:90% v lt gy-lt gy,sity
i/p,tr carb spk,tr dissem pyr,tr glauc,
dom sft,amor-sbbkly.

CALCILUTITE:10% pl-lt bn gy,aren,
tr foss frag,tr glauc,tr carb
spk,frm,mod hd i/p,sbbkly.

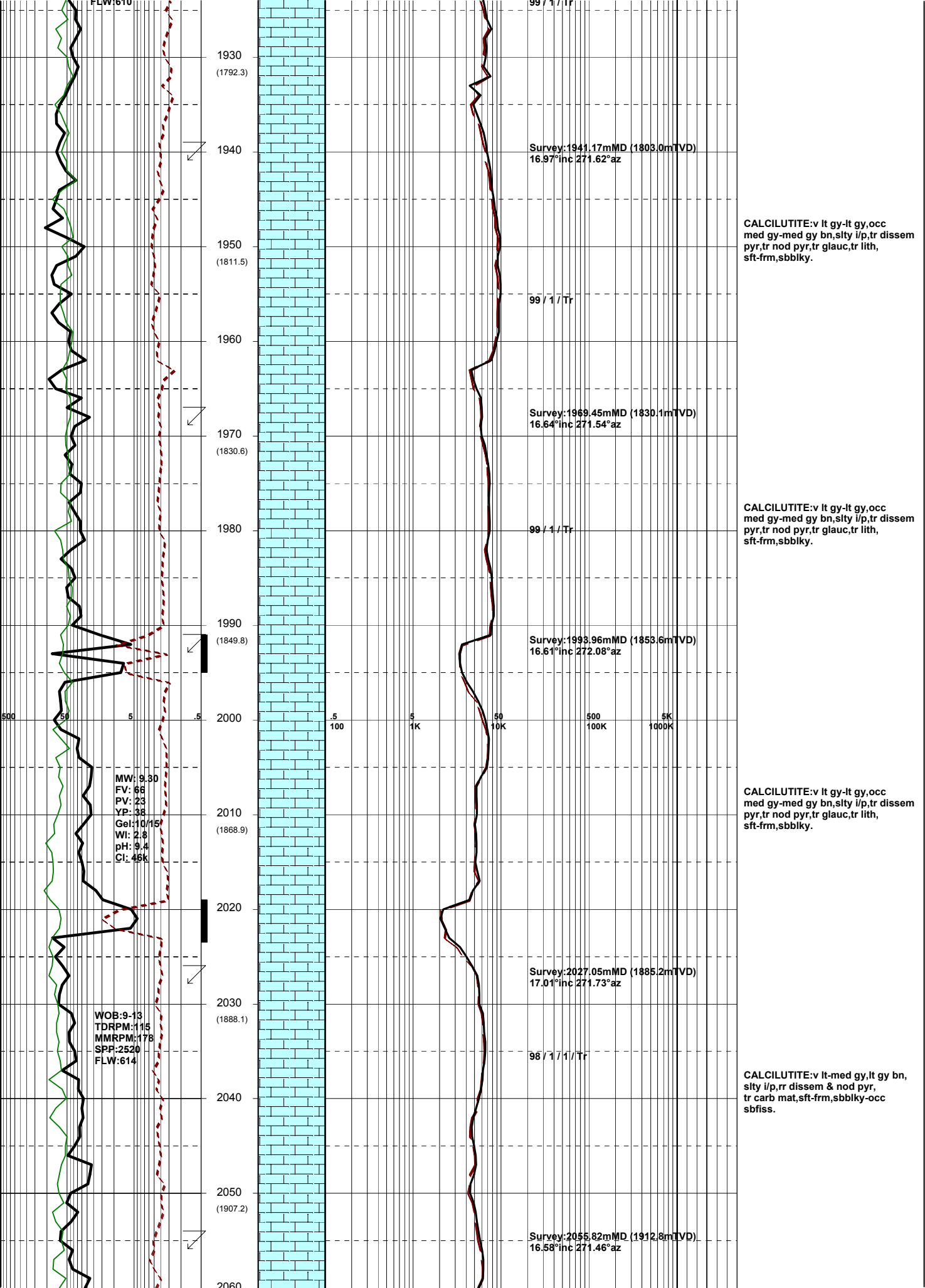
Survey:1624.82mMD (1499.8mTVD)
16.20°inc 272.72°az

MW: 9.25
FV: 75
PV: 22
YP: 39
Gel: 11/16
WI: 3.0
pH: 9.4
CI: 43k

CALCILUTITE:90% v lt gy-lt gy,sity
i/p,tr carb spk,tr dissem pyr,tr glauc,
dom sft,amor-sbbkly.

CALCILUTITE:10% pl-lt bn gy,aren

Survey:1653.78mMD (1627.6mTVD)



FLW:610

1930
(1792.3)

1940

1950
(1811.5)

1960

1970
(1830.6)

1980

1990
(1849.8)

2000

2010
(1868.9)

2020

2030
(1888.1)

2040

2050
(1907.2)

2060

Survey:1941.17mMD (1803.0mTVD)
16.97°inc 271.62°az

Survey:1969.45mMD (1830.1mTVD)
16.64°inc 271.54°az

Survey:1993.96mMD (1853.6mTVD)
16.61°inc 272.08°az

Survey:2027.05mMD (1885.2mTVD)
17.01°inc 271.73°az

Survey:2055.82mMD (1912.8mTVD)
16.58°inc 271.46°az

99 / 1 / Tr

99 / 1 / Tr

98 / 1 / Tr

MW: 9.3D
FV: 66
PV: 23
YP: 38
Gel: 10/15
WI: 2.8
pH: 9.4
Cl: 45k

WOB:9-13
TDRPM:115
MMRPM:178
SPP:2520
FLW:614

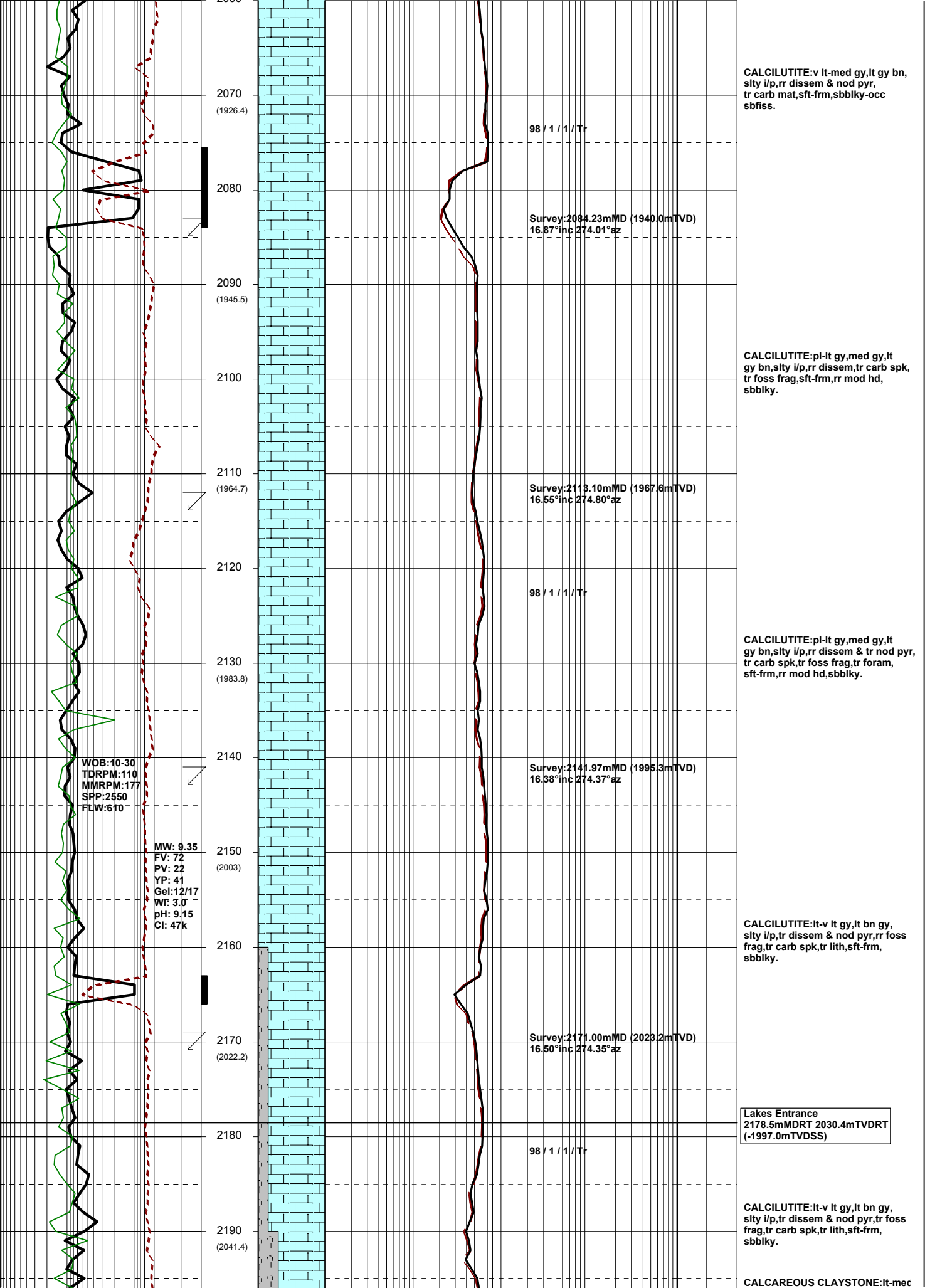
CALCILUTITE:v lt gy-lt gy,occ med gy-med gy bn,silty i/p,tr disseminated pyr,tr nod pyr,tr glauc,tr lith, sft-frn,sbbiky.

CALCILUTITE:v lt gy-lt gy,occ med gy-med gy bn,silty i/p,tr disseminated pyr,tr nod pyr,tr glauc,tr lith, sft-frn,sbbiky.

CALCILUTITE:v lt gy-lt gy,occ med gy-med gy bn,silty i/p,tr disseminated pyr,tr nod pyr,tr glauc,tr lith, sft-frn,sbbiky.

CALCILUTITE:v lt-med gy,lt gy bn, silty i/p,rr disseminated & nod pyr, tr carb mat,sft-frn,sbbiky-occ sbfiss.

500 5 5 50 500 5K
100 1K 10K 100K 1000K



CALCILUTITE:v lt-med gy,lt gy bn, sily i/p,rr disse & nod pyr, tr carb mat,sft frm,sbbkly-occ sbfiss.

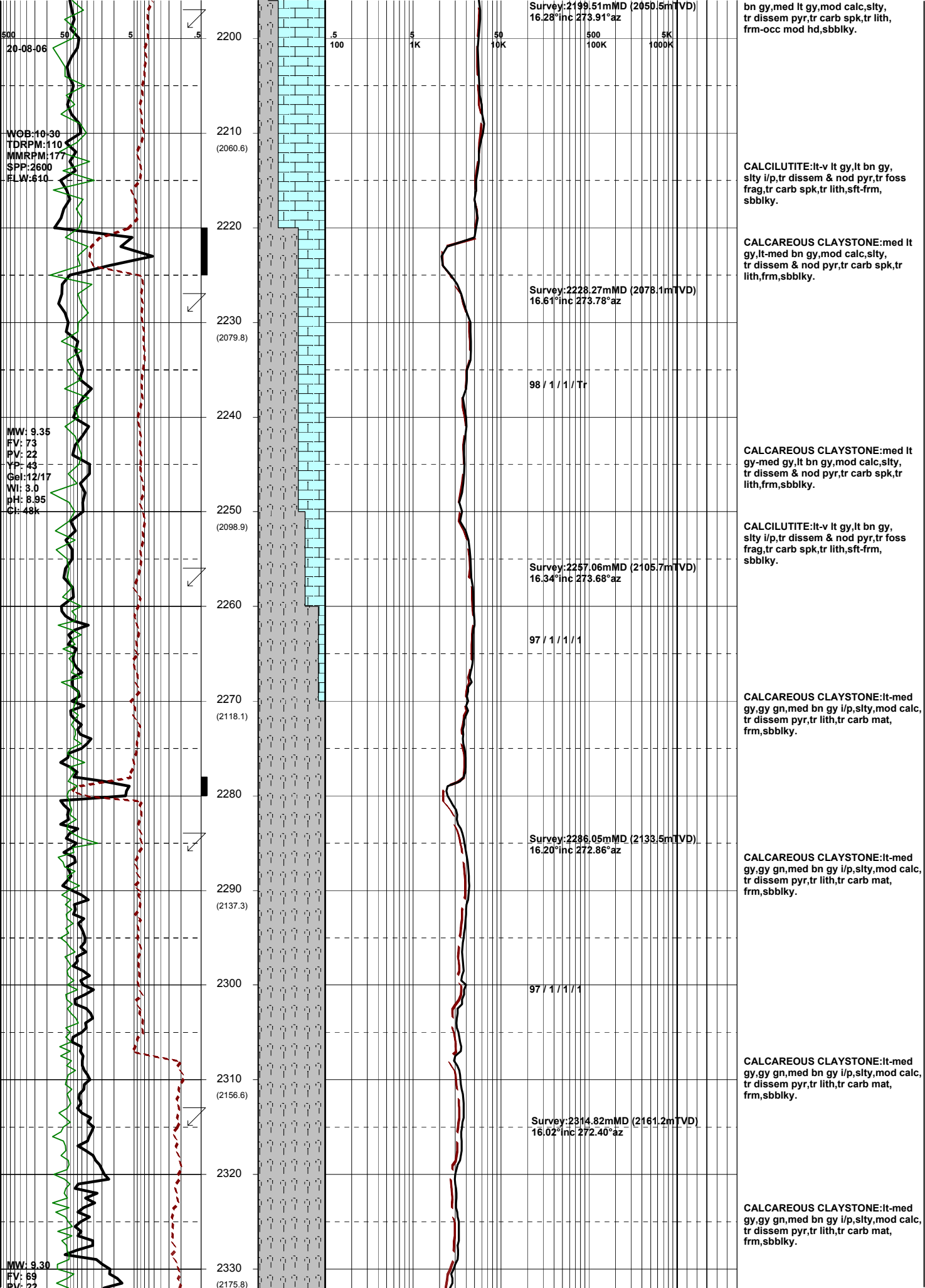
CALCILUTITE:pl-lt gy,med gy,lt gy bn,sily i/p,rr disse,tr carb spk, tr foss frag,sft frm,rr mod hd, sbbkly.

CALCILUTITE:pl-lt gy,med gy,lt gy bn,sily i/p,rr disse & tr nod pyr, tr carb spk,rr foss frag,rr mod hd,sbbkly.

CALCILUTITE:lt-v lt gy,lt bn gy, sily i/p,rr disse & nod pyr,rr foss frag,rr carb spk,rr lith,sft frm, sbbkly.

CALCILUTITE:lt-v lt gy,lt bn gy, sily i/p,rr disse & nod pyr,rr foss frag,rr carb spk,rr lith,sft frm, sbbkly.

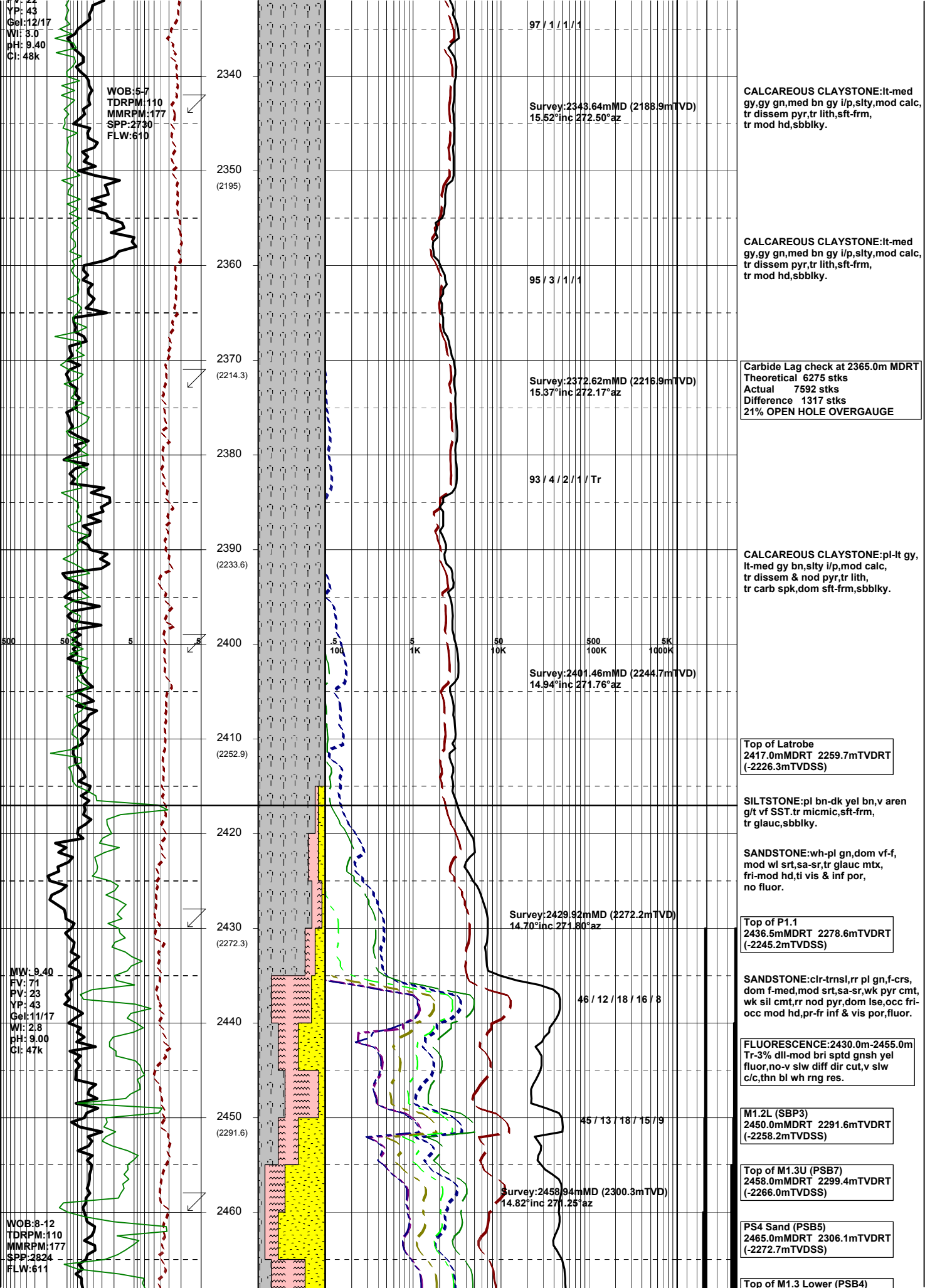
CALCREOUS CLAYSTONE:lt-mec



20-08-06
 WOB: 10-30
 TDRPM: 110
 MMRPM: 177
 SPP: 2600
 FLW: 610

MW: 9.35
 FW: 73
 PV: 22
 YP: 43
 Gel: 12/17
 WI: 3.0
 pH: 8.95
 Cl: 48k

MW: 9.30
 FW: 69
 PV: 22



YP: 43
Gel: 12/17
WI: 3.0
pH: 9.40
CI: 48k

WOB: 5-7
TDRPM: 110
MMRPM: 177
SPP: 2730
FLW: 610

97 / 1 / 1 / 1

Survey: 2343.64m MD (2188.9m TVD)
15.52° inc 272.50° az

CALCAREOUS CLAYSTONE: It-med gy, gy gn, med bn gy i/p, sity, mod calc, tr disse pyr, tr lith, sft-frm, tr mod hd, sbblky.

2340

2350
(2195)

2360

2370
(2214.3)

95 / 3 / 1 / 1

Survey: 2372.62m MD (2216.9m TVD)
15.37° inc 272.17° az

CALCAREOUS CLAYSTONE: It-med gy, gy gn, med bn gy i/p, sity, mod calc, tr disse pyr, tr lith, sft-frm, tr mod hd, sbblky.

2380

2390
(2233.6)

93 / 4 / 2 / 1 / Tr

Carbide Lag check at 2365.0m MDRT
Theoretical 6275 stks
Actual 7592 stks
Difference 1317 stks
21% OPEN HOLE OVERGAUGE

2400

2410
(2252.9)

Survey: 2401.46m MD (2244.7m TVD)
14.94° inc 271.76° az

CALCAREOUS CLAYSTONE: pl-It gy, It-med gy, bn, sity i/p, mod calc, tr disse & nod pyr, tr lith, tr carb spk, dom sft-frm, sbblky.

2420

2430
(2272.3)

Survey: 2429.92m MD (2272.2m TVD)
14.70° inc 271.80° az

Top of Latrobe
2417.0m MDRT 2259.7m TVDRT
(-2226.3m TVDSS)

SILTSTONE: pl bn-dk yel bn, v aren g/t vf SST, tr micmic, sft-frm, tr glauc, sbblky.

SANDSTONE: wh-pl gn, dom vf-f, mod wl srt, sa-sr, tr glauc mtx, fri-mod hd, ti vis & inf por, no fluor.

Top of P1.1
2436.5m MDRT 2278.6m TVDRT
(-2245.2m TVDSS)

2440

2450
(2291.6)

46 / 12 / 18 / 16 / 8

SANDSTONE: clr-trnsi, rr pl gn, f-crs, dom f-med, mod srt, sa-sr, wk pyr cmt, wk sil cmt, rr nod pyr, dom lse, occ fri-occ mod hd, pr-fr inf & vis por, fluor.

FLUORESCENCE: 2430.0m-2455.0m
Tr-3% dl-mod bri sptd gnsh yel fluor, no-v slw diff dir cut, v slw c/c, thn bl wh rng res.

2460

Survey: 2458.94m MD (2300.3m TVD)
14.82° inc 271.25° az

M1.2L (SBP3)
2450.0m MDRT 2291.6m TVDRT
(-2258.2m TVDSS)

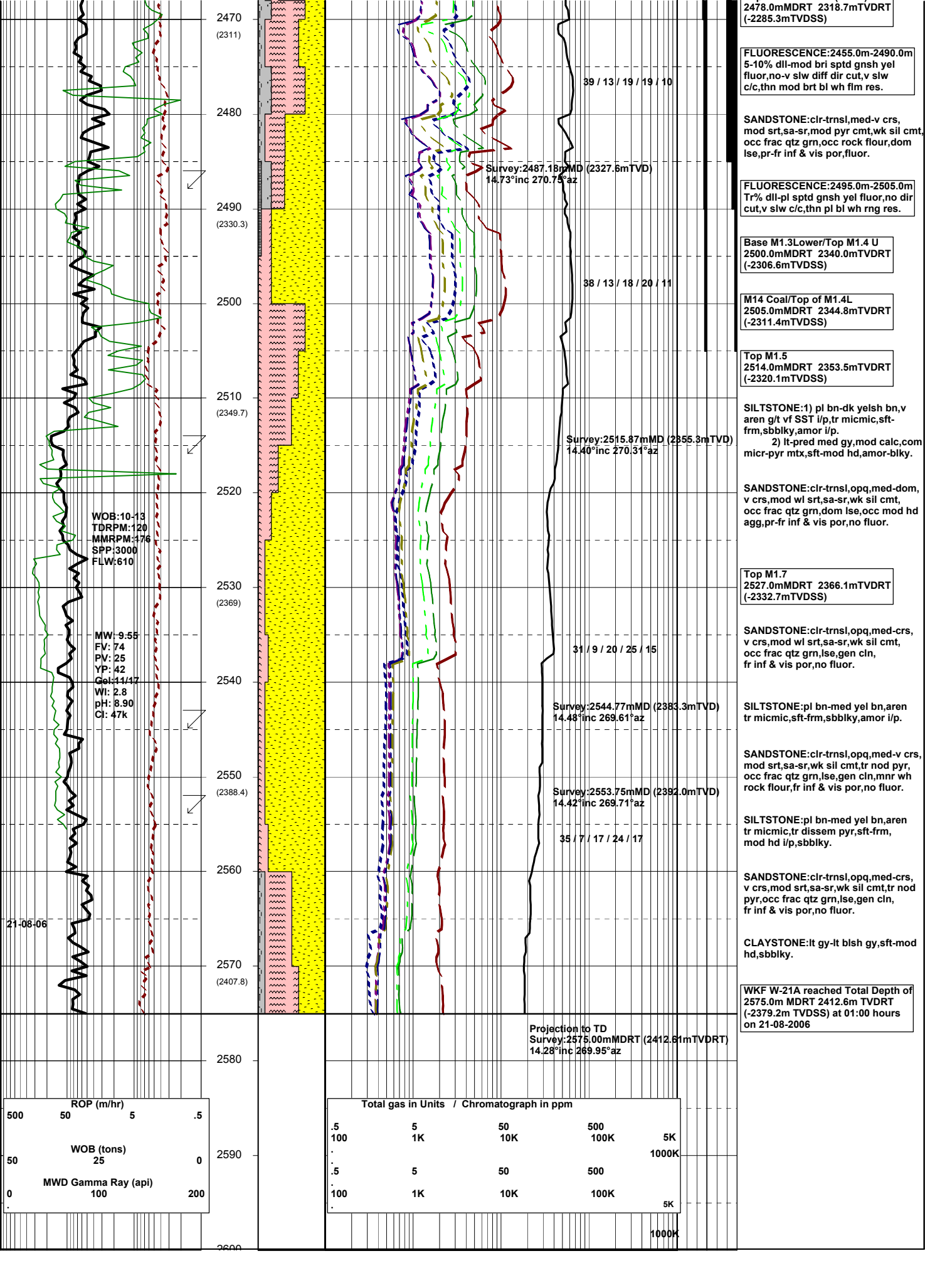
Top of M1.3U (PSB7)
2458.0m MDRT 2299.4m TVDRT
(-2266.0m TVDSS)

PS4 Sand (PSB5)
2465.0m MDRT 2306.1m TVDRT
(-2272.7m TVDSS)

Top of M1.3 Lower (PSB4)

MW: 9.40
FV: 71
PV: 23
YP: 43
Gel: 11/17
WI: 2.6
pH: 9.00
CI: 47k

WOB: 8-12
TDRPM: 110
MMRPM: 177
SPP: 2824
FLW: 611



2478.0mMDRT 2318.7mTVDRT (-2285.3mTVDSS)

FLUORESCENCE:2455.0m-2490.0m
5-10% dll-mod bri sptd gnsh yel fluor, no-v slw diff dir cut, v slw c/c, thn mod brt bl wh flm res.

SANDSTONE:clr-trnsl, med-v crs, mod srt, sa-sr, mod pyr cmt, wk sil cmt, occ frac qtz gm, occ rock flour, dom lse, pr-fr inf & vis por, fluor.

FLUORESCENCE:2495.0m-2505.0m
Tr% dll-pl sptd gnsh yel fluor, no dir cut, v slw c/c, thn pl bl wh rng res.

Base M1.3 Lower/Top M1.4 U
2500.0mMDRT 2340.0mTVDRT (-2306.6mTVDSS)

M14 Coal/Top of M1.4L
2505.0mMDRT 2344.8mTVDRT (-2311.4mTVDSS)

Top M1.5
2514.0mMDRT 2353.5mTVDRT (-2320.1mTVDSS)

SILTSTONE:1) pl bn-dk yelsh bn, v aren g/t vf SST i/p, tr micmic, sft-frm, sbbkly, amor i/p.
2) lt-pred med gy, mod calc, micr-pyr mt, sft-mod hd, amor-blky.

SANDSTONE:clr-trnsl, opq, med-dom, v crs, mod wl srt, sa-sr, wk sil cmt, occ frac qtz gm, dom lse, occ mod hd agg, pr-fr inf & vis por, no fluor.

Top M1.7
2527.0mMDRT 2366.1mTVDRT (-2332.7mTVDSS)

SANDSTONE:clr-trnsl, opq, med-crs, v crs, mod wl srt, sa-sr, wk sil cmt, occ frac qtz gm, lse, gen cln, fr inf & vis por, no fluor.

SILTSTONE:pl bn-med yel bn, aren tr micmic, sft-frm, sbbkly, amor i/p.

SANDSTONE:clr-trnsl, opq, med-v crs, mod srt, sa-sr, wk sil cmt, tr nod pyr, occ frac qtz gm, lse, gen cln, mnr wh rock flour, fr inf & vis por, no fluor.

SILTSTONE:pl bn-med yel bn, aren tr micmic, tr dissem pyr, sft-frm, mod hd i/p, sbbkly.

SANDSTONE:clr-trnsl, opq, med-crs, v crs, mod srt, sa-sr, wk sil cmt, tr nod pyr, occ frac qtz gm, lse, gen cln, fr inf & vis por, no fluor.

CLAYSTONE:lt gy-it blsh gy, sft-mod hd, sbbkly.

WKF W-21A reached Total Depth of 2575.0m MDRT 2412.6m TVDRT (-2379.2m TVDSS) at 01:00 hours on 21-08-2006

2470 (2311)
2480
2490 (2330.3)
2500
2510 (2349.7)
2520
2530 (2369)
2540
2550 (2388.4)
2560
2570 (2407.8)
2580

39 / 13 / 19 / 19 / 10

Survey:2487.18mMD (2327.6mTVD)
14.73°inc 270.75°az

38 / 13 / 18 / 20 / 11

Survey:2515.87mMD (2355.3mTVD)
14.40°inc 270.31°az

31 / 9 / 20 / 25 / 15

Survey:2544.77mMD (2383.3mTVD)
14.48°inc 269.61°az

Survey:2553.75mMD (2392.0mTVD)
14.42°inc 269.71°az

35 / 7 / 17 / 24 / 17

Projection to TD
Survey:2575.00mMDRT (2412.61mTVDRT)
14.28°inc 269.95°az

WOB:10-13
TDRPM:120
MMRPM:176
SPP:3000
FLW:610

MW-9.55
FV: 74
PV: 25
YP: 42
Gel:11/17
WI: 2.8
pH: 8.90
Cl: 47k

21-08-06

ROP (m/hr)			
500	50	5	.5
WOB (tons)			
50	25	0	2590
MWD Gamma Ray (api)			
0	100	200	

Total gas in Units / Chromatograph in ppm				
.5	5	50	500	5K
100	1K	10K	100K	5K
.	.	.	.	1000K
.5	5	50	500	
100	1K	10K	100K	5K
.	.	.	.	1000K

